

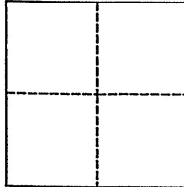
CORNER RECORD

Agency Index **BK 106 PG 39**
Document Number **CR 10796**

City of CASTRO VALLEY County of ALAMEDA, California
Brief Legal Description BJ81B1 (FAIRMONT DRIVE EAST OF FOOTHILL BLVD)

CORNER TYPE

COORDINATES (Optional)



Government Corner ☒ Control ☐
Meander ☐ Property ☐
Rancho ☐ Other ☐

N. _____ E. _____

Elevation _____

Units Metric ☐ U.S. Survey Foot ☒

Horizontal Datum _____

Zone _____ Epoch Date _____

Vertical Datum _____

☐ Complies with Public Resources Code §§8801-8819

☐ Complies with Public Resources Code §§8890-8902

PLS Act Ref.: ☐ 8765(d) ☒ 8771 ☐ 8773 ☐ Other:
Corner/Monument: ☐ Left as found ☐ Established ☐ Rebuilt ☐ Pre-Construction
☐ Found and tagged ☐ Reestablished ☐ Referenced ☒ Post-Construction

Narrative of corner identified and monument as found, set, reset, replaced, or removed:

☒ See sheet #2 for description(s):

*FOUND COUNTY BRASS CAP MON BJ81B1, MARKED "11A" IN MON WELL, DOWN 12",
FOUND FOUR MAG NAILS AND TIES TO PU55F6 MONUMENT MARKED "11B" PER
CR 10654 AND AS SHOWN ON SHEET 2.*

SURVEYOR'S STATEMENT

This Corner Record was prepared by me or under my direction in conformance with

the Professional Land Surveyors' Act on NOVEMBER 9, 2017.

Signed *James N. Landrum* P.L.S. or R.C.E. No. LS 5837



COUNTY SURVEYOR'S STATEMENT

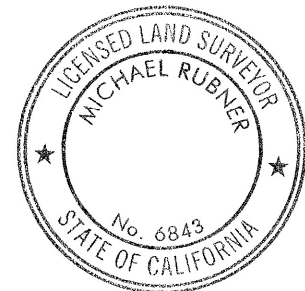
This Corner Record was received 13 NOVEMBER 2017

and examined and filed 16 MARCH 2018.

Signed *Michael Rubner* P.L.S. or R.C.E. No. 6843

Title COUNTY SURVEYOR

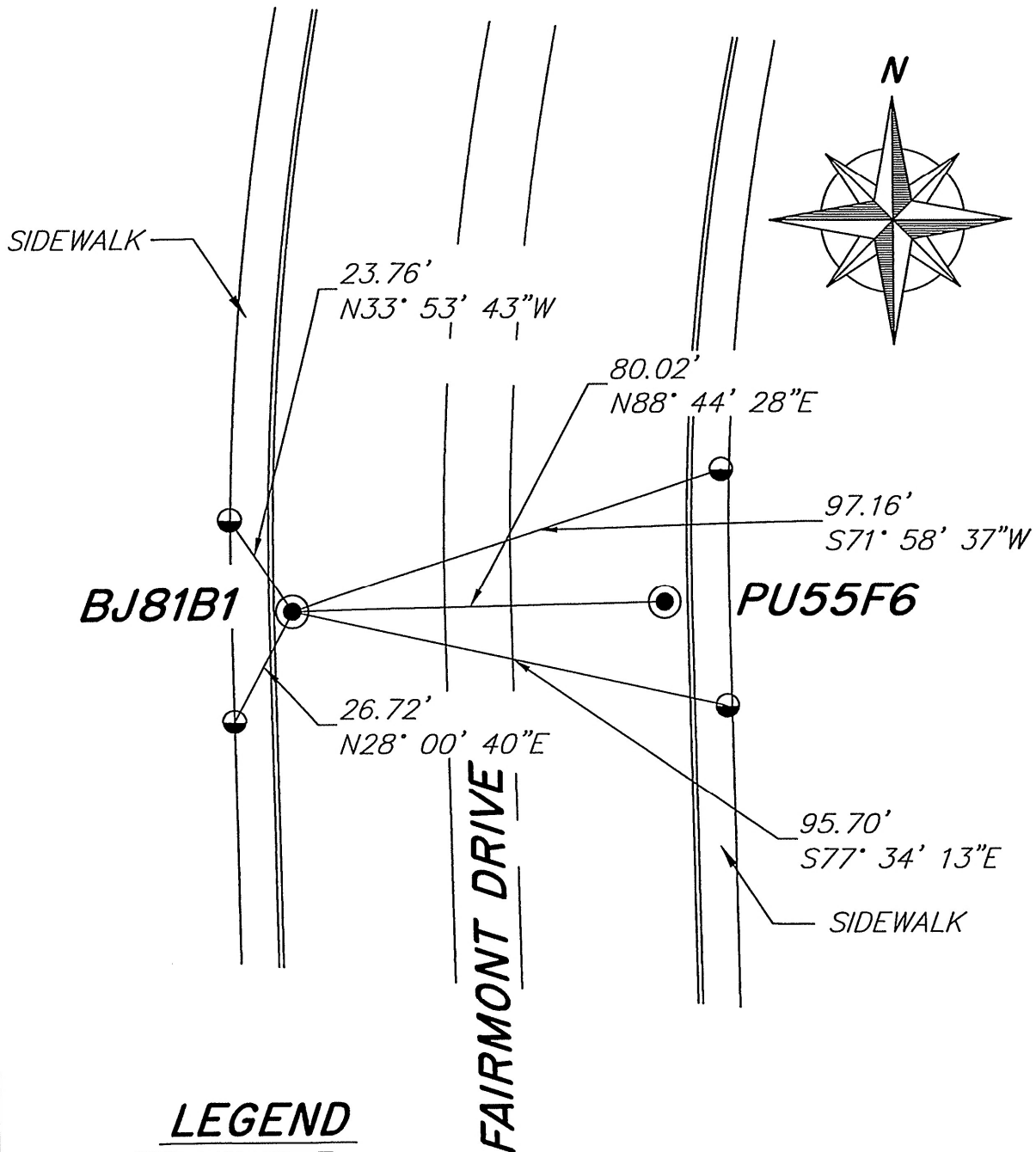
County Surveyor's Comment



SPEC 2321

BJ81B1

NO SCALE



LEGEND

● FOUND ACBCM IN MON WELL

● FOUND MAG NAIL UNLESS
OTHERWISE SHOWN

ACBCM ALAMEDA COUNTY
BRASS CAP MONUMENT

NOTE THAT BEARINGS ARE
APPROXIMATE AND ARE TO
BE USED FOR ANGLE
CALCULATIONS ONLY.