

Blue Sky Rainbow

Brian Crain

$\text{♩} = 176$

Measures 1-5 of the piece. The music is in 6/8 time with a key signature of three flats (B-flat, E-flat, A-flat). The tempo is marked $\text{♩} = 176$. The dynamics are marked *mp* (mezzo-piano). The right hand features a melody with dotted rhythms and eighth-note patterns, while the left hand plays a steady eighth-note accompaniment.

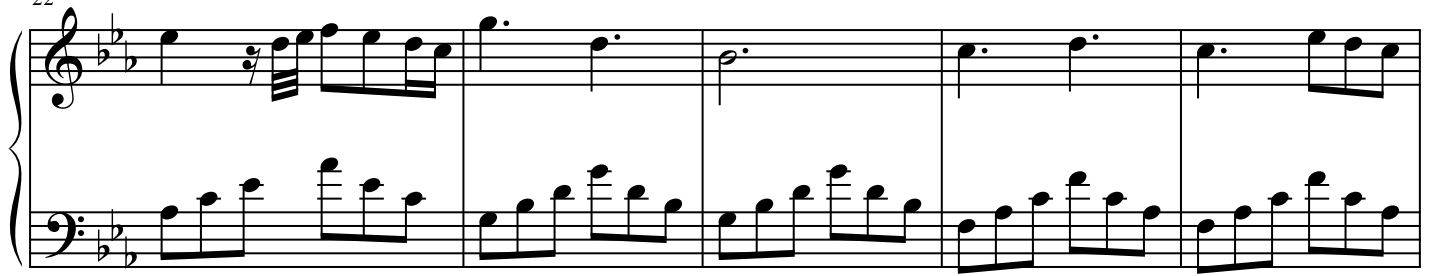
Measures 6-10 of the piece. The right hand continues the melodic line with various rhythmic patterns, including a triplet in measure 6. The left hand maintains the eighth-note accompaniment.

Measures 11-16 of the piece. The right hand melody includes a key signature change to two flats (B-flat, E-flat) in measure 15. The left hand accompaniment remains consistent.

Measures 17-21 of the piece. The right hand melody features a repeat sign at the beginning of measure 17. The left hand accompaniment continues with the same eighth-note pattern.

Blue Sky Rainbow

22



27



33

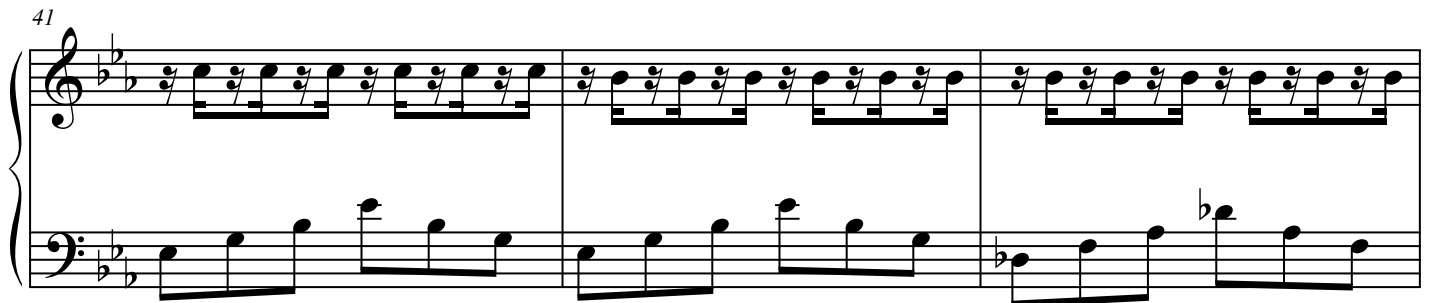
Smoothly



37



41



Blue Sky Rainbow

44

Measures 44-47 of the piece. The music is in 3/4 time with a key signature of two flats (B-flat and E-flat). The right hand features a continuous eighth-note accompaniment pattern. The left hand plays a simple bass line with quarter and eighth notes, including a B-flat in measure 45.

48

Measures 48-50. Measure 48 ends with a repeat sign. In measure 49, the right hand changes to a dotted quarter note pattern. The left hand continues with quarter and eighth notes, featuring B-flat notes in measures 49 and 50.

51

Measures 51-54. The right hand returns to the eighth-note accompaniment pattern. The left hand continues with quarter and eighth notes, featuring B-flat notes in measures 53 and 54.

55

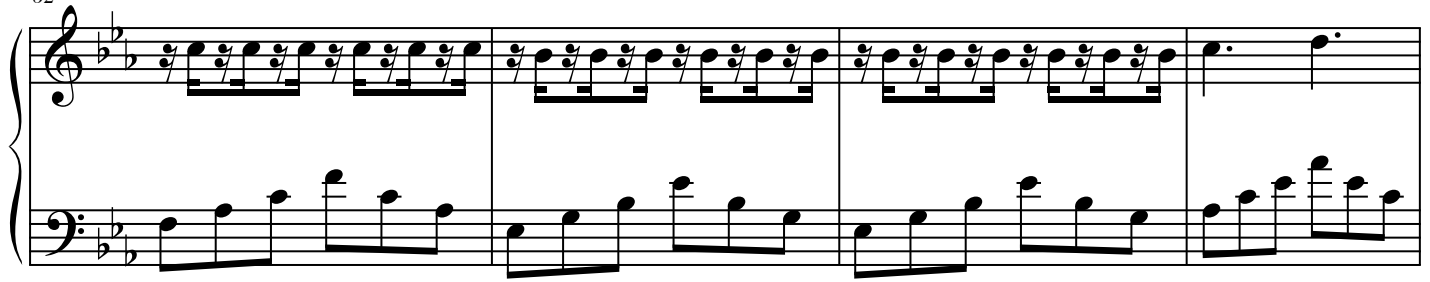
Measures 55-58. The right hand continues with the eighth-note accompaniment pattern. The left hand plays a steady bass line of quarter and eighth notes.

59

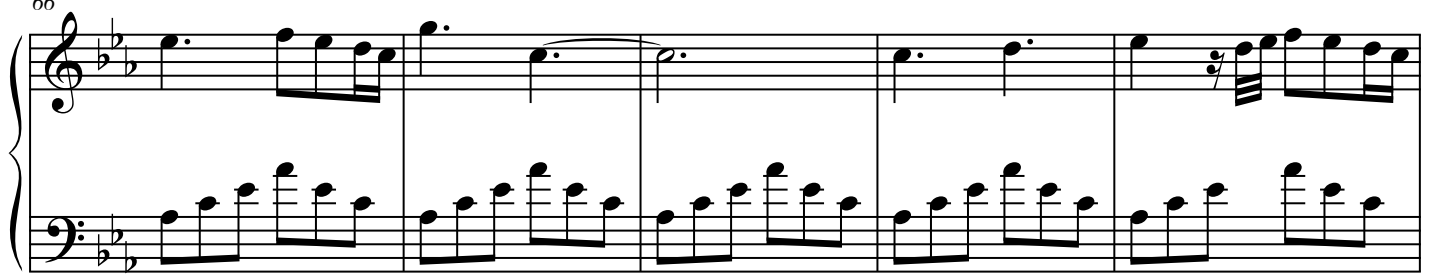
Measures 59-61. The right hand changes to a dotted quarter note pattern. The left hand continues with quarter and eighth notes, featuring B-flat notes in measures 59 and 60.

Blue Sky Rainbow

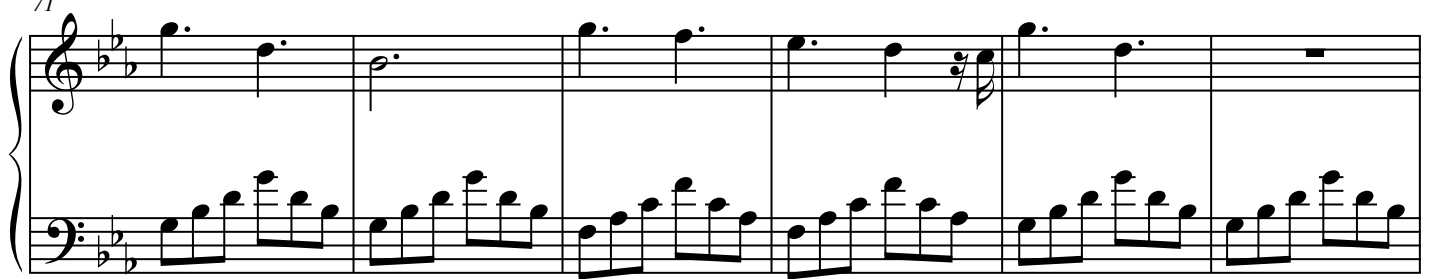
62



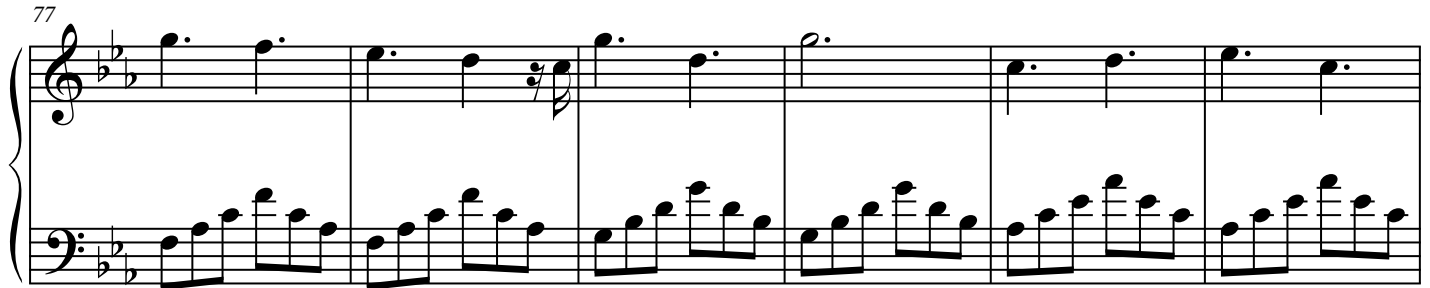
66



71



77



83

