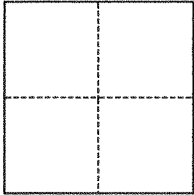


# CORNER RECORD

Agency Index BK 144 PG 89  
Document Number CR 15179

City of San Leandro County of Alameda, California  
Brief Legal Description County Survey Monument on Endicott Street

## CORNER TYPE



☐ Government Corner ☒ Control  
☐ Meander ☐ Property  
☐ Rancho ☐ Other

Date of Survey March 4, 2021

## COORDINATES (Optional)

N. \_\_\_\_\_ E. \_\_\_\_\_

Elevation \_\_\_\_\_

Units ☐ Metric ☒ U.S. Survey Foot

Horizontal Datum \_\_\_\_\_

Zone \_\_\_\_\_ Epoch Date \_\_\_\_\_

Vertical Datum \_\_\_\_\_

☐ Complies with Public Resources Code §§8801-8819

☐ Complies with Public Resources Code §§8890-8902

PLS Act Ref.: ☐ 8765(d) ☒ 8771 ☐ 8773 ☐ Other:

Corner/  
Monument: ☒ Left as found ☐ Established ☐ Rebuilt ☒ Pre-Construction  
☐ Found and tagged ☐ Reestablished ☒ Referenced ☐ Post-Construction

Narrative of corner identified and monument as found, set, reset, replaced, or removed:

☒ See sheet #2 for description(s):

## SURVEYOR'S STATEMENT

This Corner Record was prepared by me or under my direction in conformance with

the Professional Land Surveyors' Act on

Signed

Joseph M. Brajkovich 4-14-2021  
P.L.S. or R.C.E. No. 5254



## COUNTY SURVEYOR'S STATEMENT

This Corner Record was received

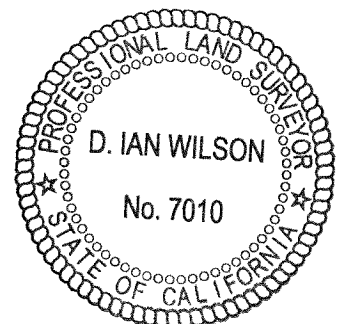
and examined and filed

Signed

D. Ian Wilson JAN 12 2022  
P.L.S. or R.C.E. No. 7010

Title ALAMEDA COUNTY SURVEYOR

County Surveyor's Comment

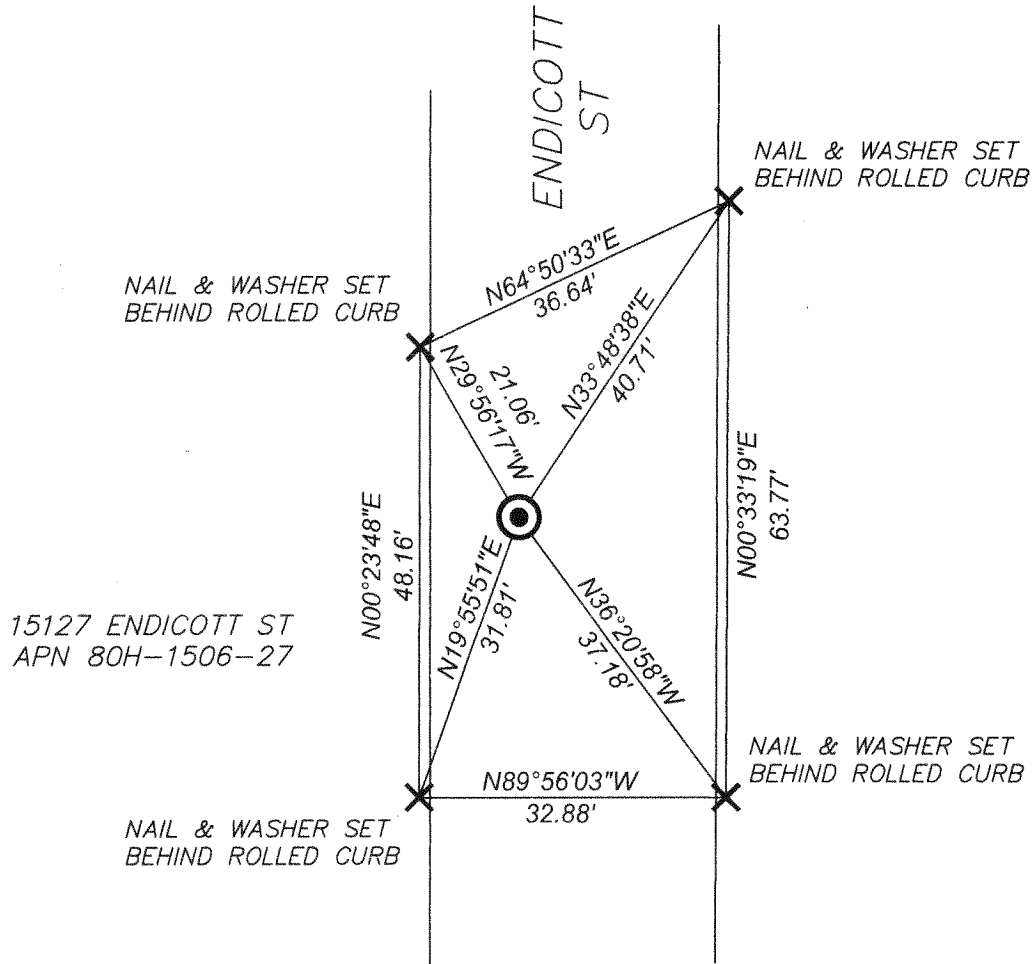




SCALE: 1" = 20'

# LEGEND

- #### STREET ADDRESS
- APN ASSESSOR'S PARCEL NUMBER
- ✕ NAIL & WASHER SET AS DISPLAYED
- ⊙ FOUND SURVEY MONUMENT (1/8" PIN IN CONC IN WELL)



21035 SHEET C-1