

PARCEL MAP NO. 36-74

SITUATED IN SECTION 34, TOWNSHIP 3 SOUTH,  
RANGE 27 EAST, M.D.M.

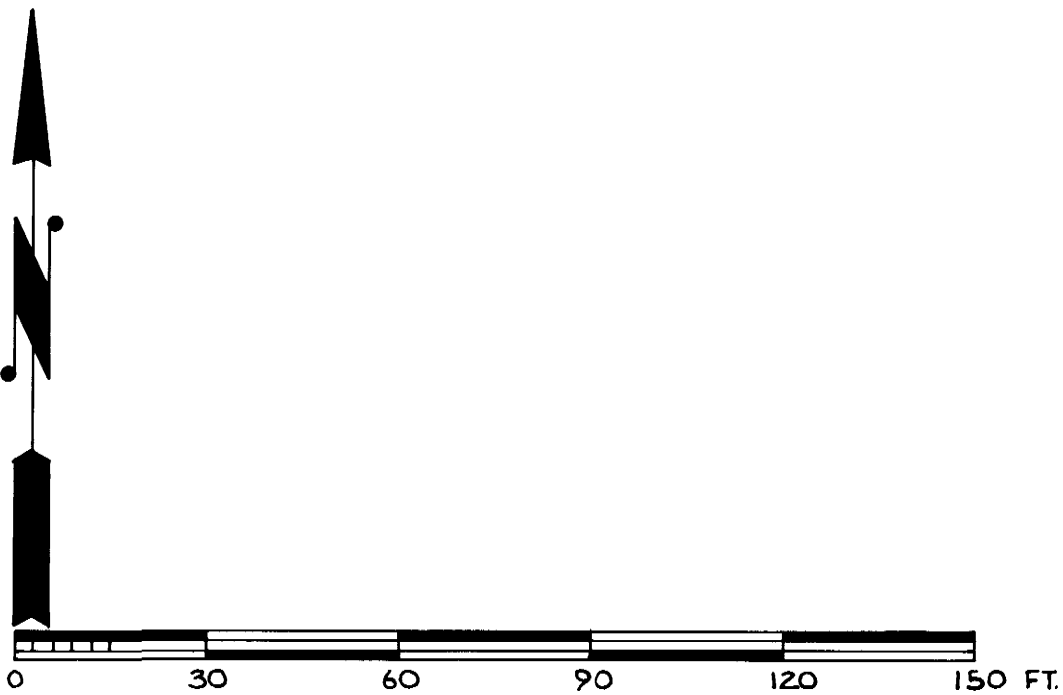
BEING A SUBDIVISION OF LOT 63 OF TRACT NO.  
2 OF SIERRA VALLEY SITES, RECORDED IN BOOK  
1, PAGE 2 OF ASSESSMENT MAPS, IN THE  
COUNTY OF MONO, STATE OF CALIFORNIA.

LEGEND:  
R = RECORD  
M = MEASURED

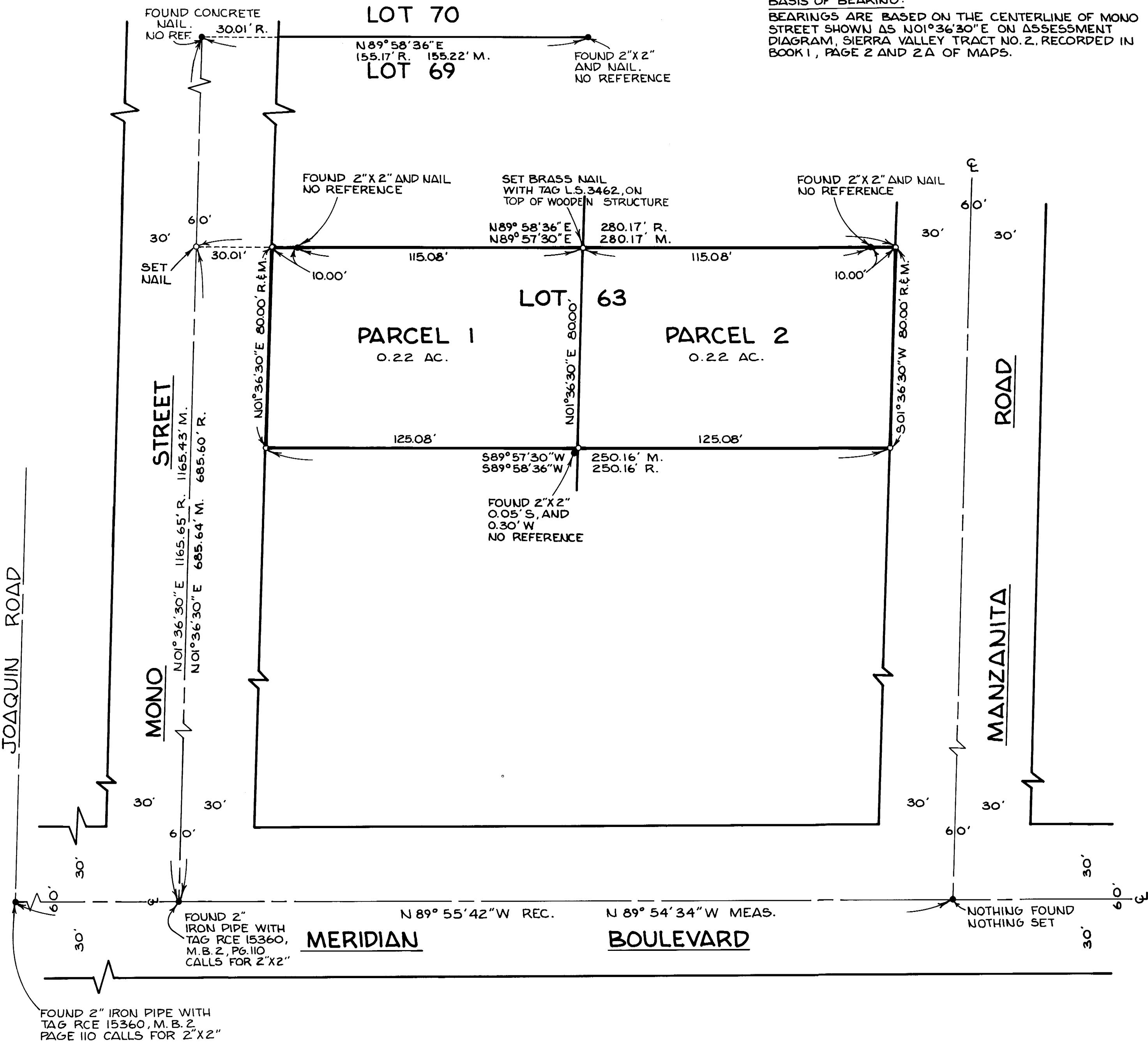
NOTES:  
RECORD DATA SHOWN IS PER MAP RECORDED IN  
BOOK 1, PAGE 2 & 2A OF ASSESSMENT MAPS IN  
THE OFFICE OF THE COUNTY RECORDER OF MONO  
COUNTY.

MONUMENTATION:

- INDICATES SET 2" IRON PIPE WITH TAG L.S. 3462  
FLUSH WITH THE GROUND UNLESS OTHERWISE NOTED.
- INDICATES FOUND MONUMENTS AS NOTED HEREON.



BASIS OF BEARING:  
BEARINGS ARE BASED ON THE CENTERLINE OF MONO  
STREET SHOWN AS N01°36'30"E ON ASSESSMENT  
DIAGRAM, SIERRA VALLEY TRACT NO. 2, RECORDED IN  
BOOK 1, PAGE 2 AND 2A OF MAPS.



P/H Vol 2 PAGE 2-A