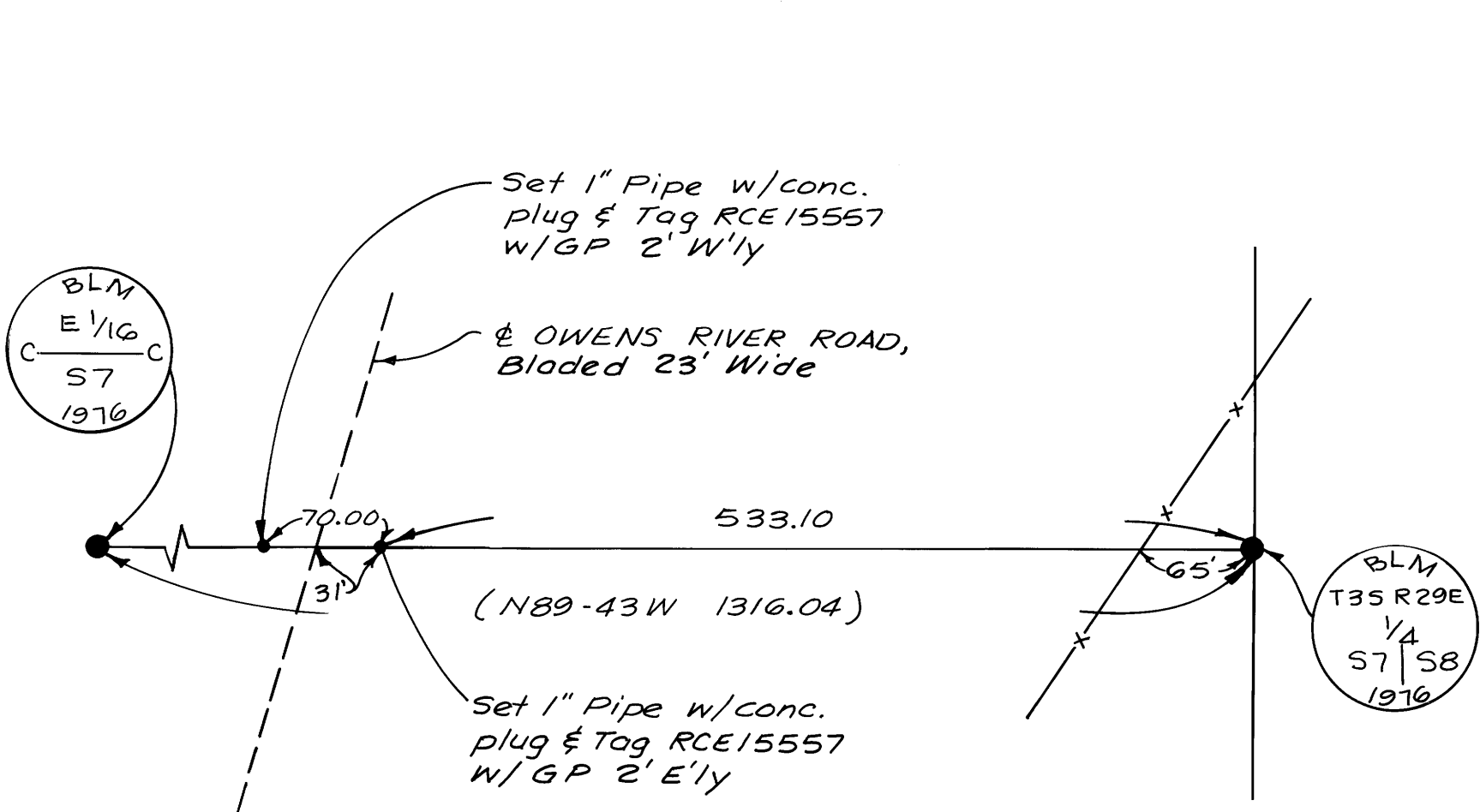


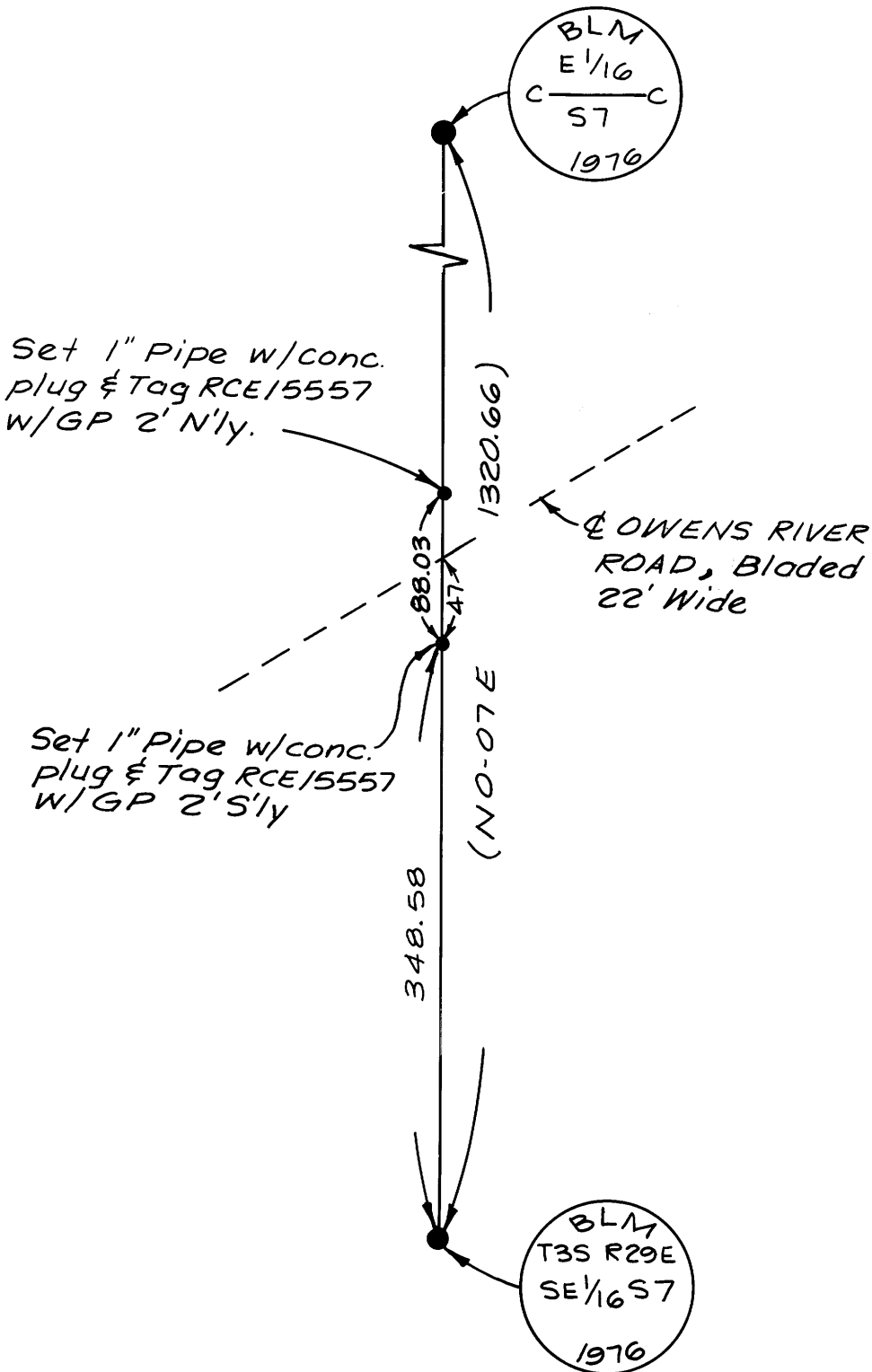
RECORD OF SURVEY NO. 37 - 25

IN THE UNINCORPORATED
TERRITORY OF THE COUNTY
OF MONO, STATE OF CALIFORNIA

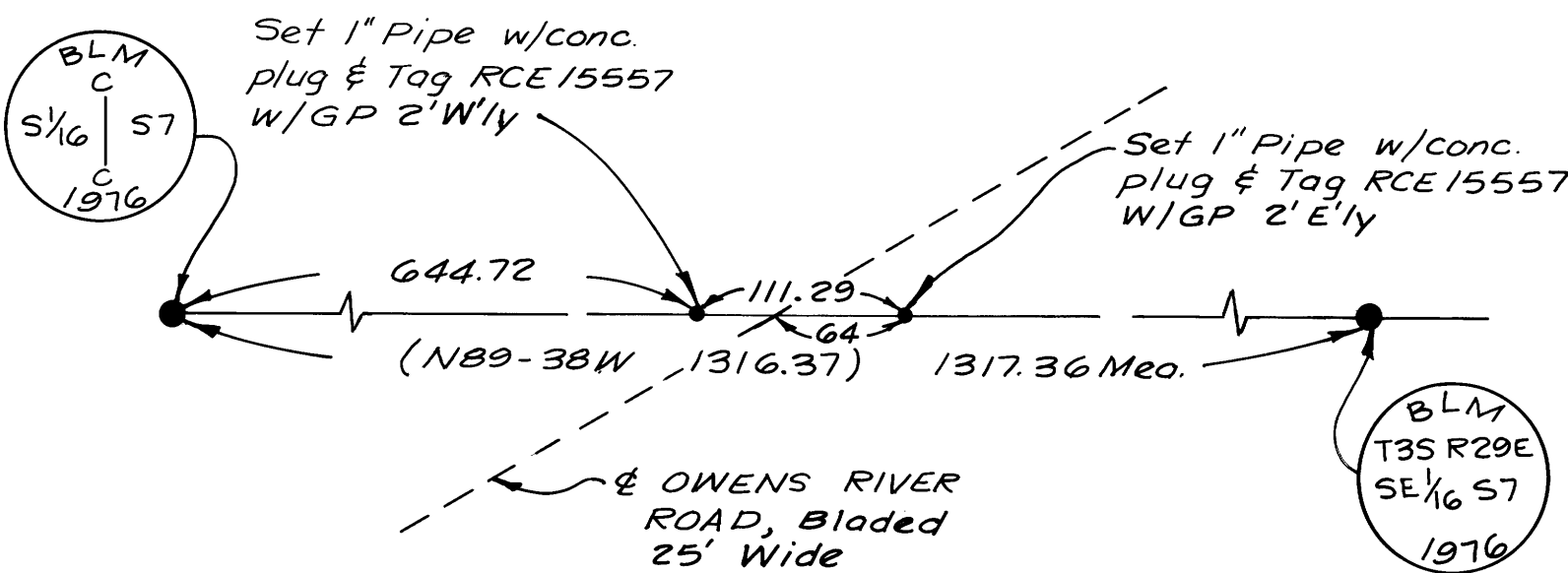
BEING A SURVEY OF A PORTION
OF SECTIONS 7 & 8 TOWNSHIP 3
SOUTH RANGE 29 EAST, M.D.M.



DETAIL "A"
1"=100'

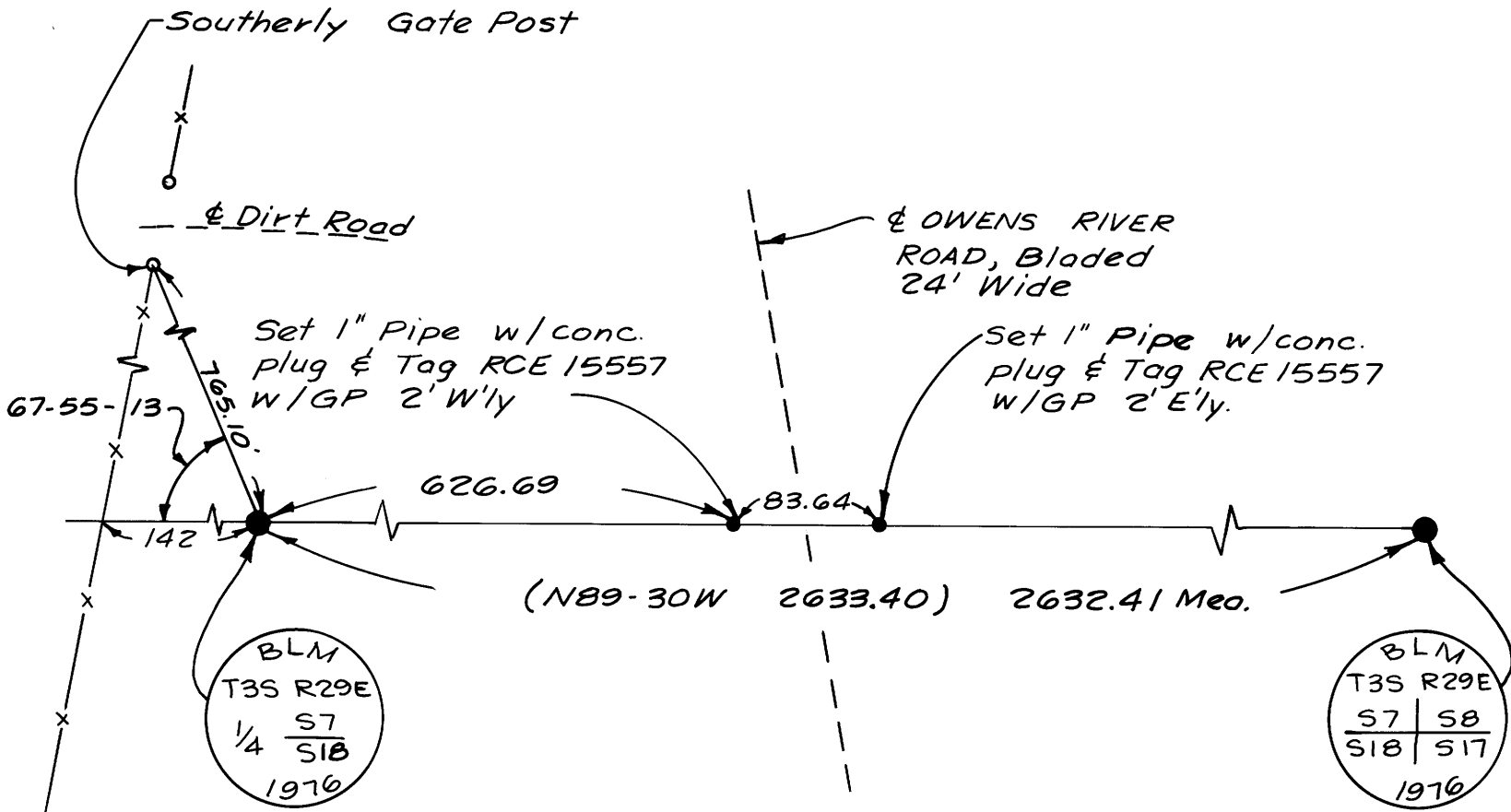


DETAIL "B"
1"=100'



DETAIL "C"
1"=100'

NOTE: All Monuments at Road
Crossings show line only
unless otherwise stated.



DETAIL "D"
1"=100'

E/S Vol. 1 Page 104-B