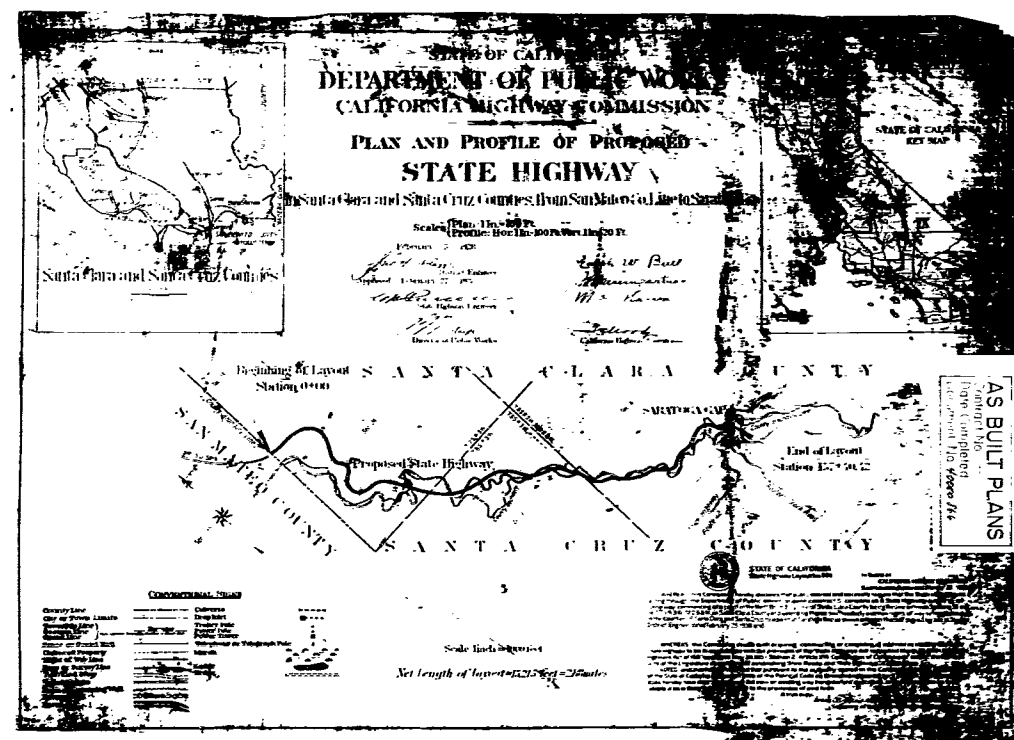
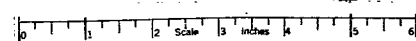
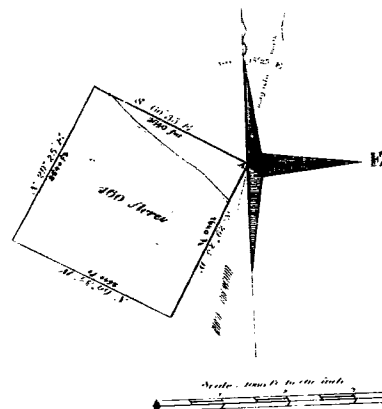


585

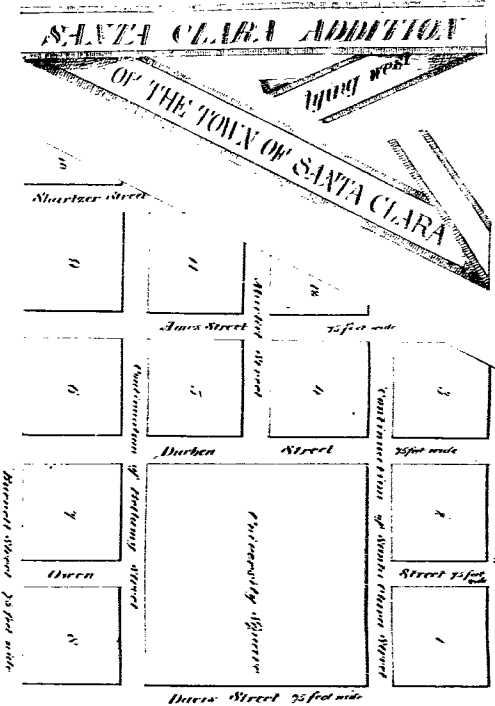


585

PLAN
of a
PERMISSION - CLAIM
held by
E. G. Suerlin.
Surveyed Aug 25th 1852
by **C. French Healy.**



Subsect about eight miles from Santa Clara
on the Stage Road between San Jose and San
Francisco
Line commencing at an old stake
marked S.P. A on the line and running S 29° 25' W
2460 feet and so on to the place of beginning as
is shown in the plan. It contains
is an old stake marked S.P.
Filed Dec 6th 1852 **E. G. Suerlin** Recorder



The Lots are 300 feet Square
Scale 200 feet to the inch
Surveyed January 20th 1853. By **B. H. C. Hartfield.**

Filed Aug 2nd 1853 at 10 o'clock A.M.
of the Survey Clerk
by **C. French Healy**

59
586