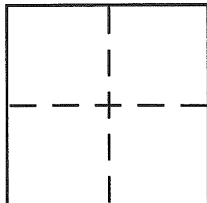


CORNER RECORD

Document Number 01-099 13-CF-070
212 1548City of OAKLANDCounty of ALAMEDA, CaliforniaBrief Legal Description LOT 3, BLOCK 10, FOURTH AVENUE HEIGHTS (25 M 43)

CORNER TYPE

Government Corner ☐ Control ☐
Meander ☐ Property ☒
Rancho ☐ Other ☐
Date of Survey JUNE 16, 2001

COORDINATES (Optional)

N. _____
E. _____
Zone _____ NAD27 ☐ NAD83 ☐
NAD83 Epoch _____
Elev. _____
Vert. Datum: NGVD29 ☐ NAVD88 ☐
Meas. Units: Metric ☐ Imperial ☐

Corner - Left as found ☐ Found and tagged ☐ Established ☒ Reestablished ☐ Rebuilt ☐

Identification and type of corner found: Evidence used to identify or procedure used to establish or reestablish the corner:

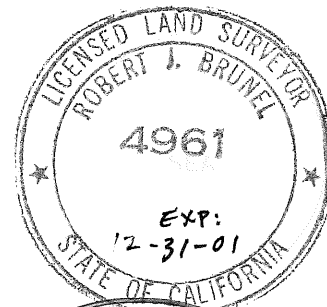
FOUND P.K. NAILS AT C/L EDGEWOOD PER CIRL 527

A description of the physical condition of the monument as found and as set or reset:

FOUND BRASS TAG, LS 6995 PER CIRL 527
SET 2" HUB WITH BRASS TAG, LS 4961

SURVEYOR'S STATEMENT

This Corner Record was prepared by me or under my direction in conformance with
the Land Surveyor's Act on AUGUST 7 2001.

Signed Robert J. Brunel P.L.S. or P.C.E. No. 4961

COUNTY SURVEYOR'S STATEMENT

This Corner Record was received 8.23.01
and examined and filed 9-17-01

Signed Russell R. Penland, Jr. P.L.S. or P.C.E. No. 5726Title COUNTY SURVEYOR

County Surveyor's Comment _____

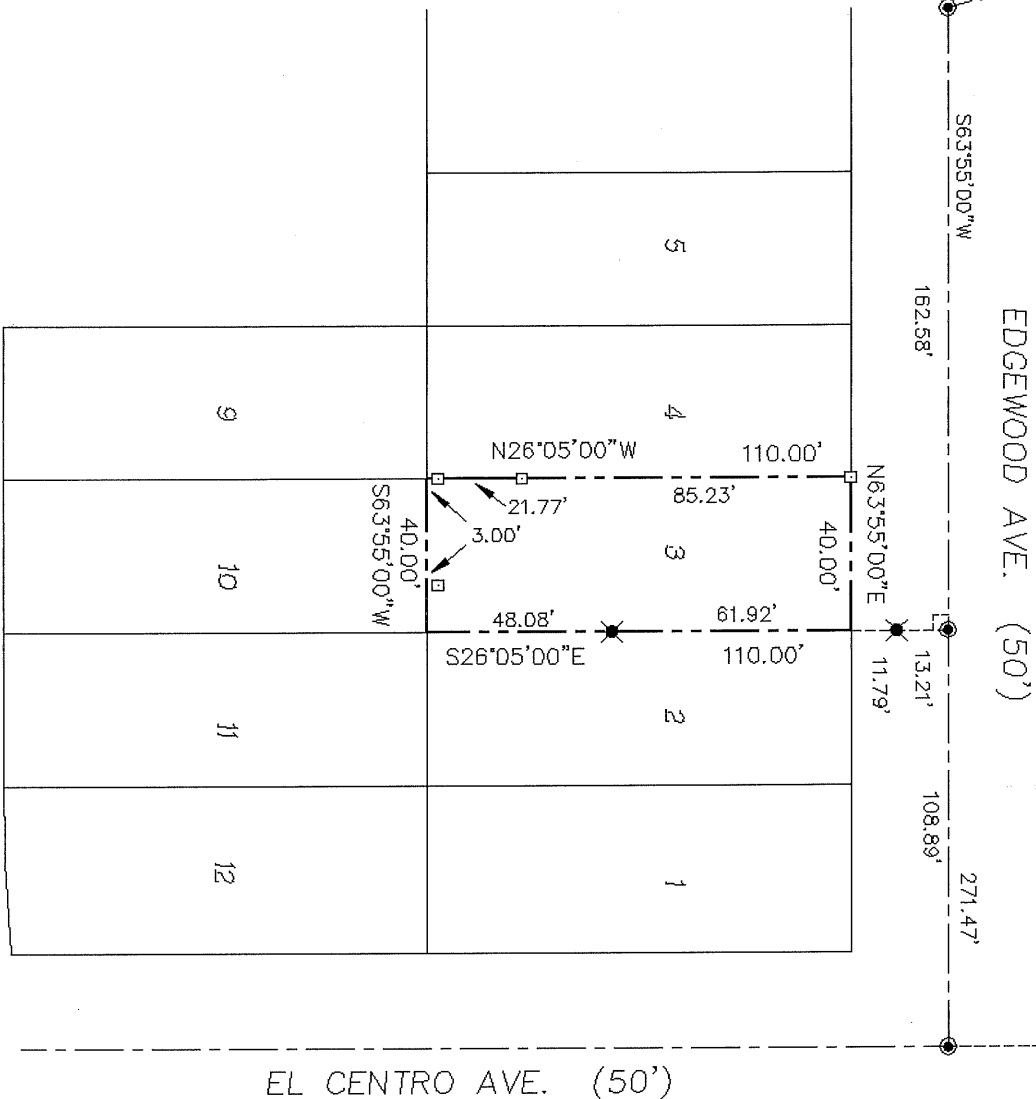


CORNER RECORD

LOT 3, BLOCK 10
FOURTH AVENUE HEIGHTS (25 M 43)

CITY OF OAKLAND, COUNTY OF ALAMEDA, CALIFORNIA

JUNE 16, 2001 SCALE: 1" = 50'



LEGEND

- FOUND P.K. NAIL PER C/R 1527
- ✕ FOUND BRASS TAG, LS 6995 PER C/R 1527
- SET 2" HUB WITH BRASS TAG, LS 4961

MONTCLAIR LAND SURVEYING

ROBERT L. BRUNEL - LICENSED LAND SURVEYOR
OAKLAND, CALIFORNIA

F.B. NO. 134

EDGEWOOD.DWG

JOB NO. 101-236