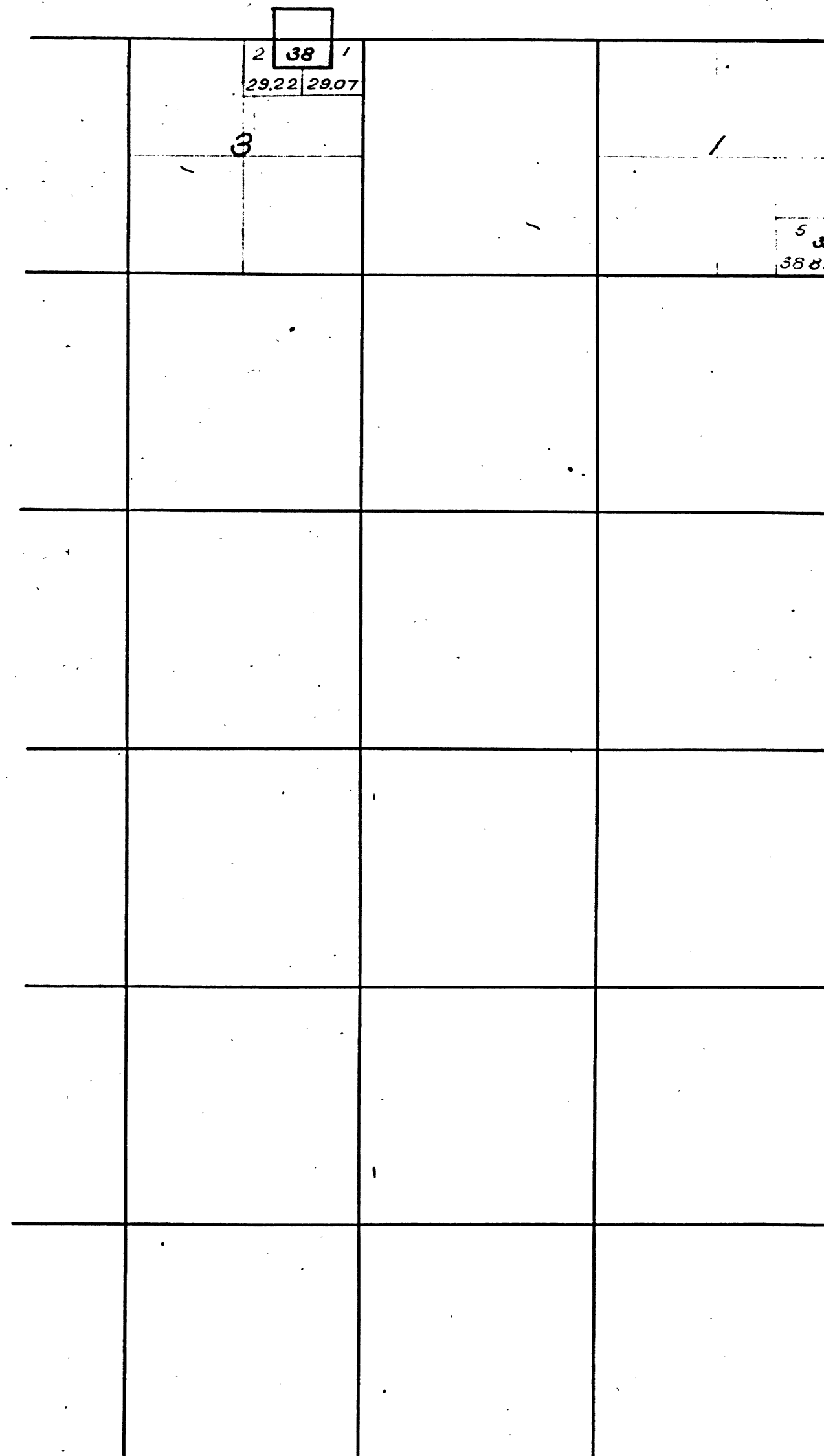


Township N<sup>o</sup> 1 North, Range N<sup>o</sup> 13 East, Mount Diablo Meridian.

O.C.S.  
1897

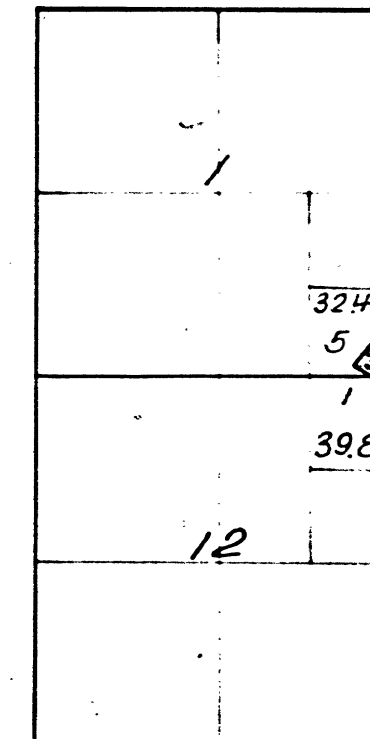
1



584-N<sup>o</sup> 37 Pino Blanco Quartz Mine.  
2,177 - 38 Bostwick Bar Placer Mine.

3882

T. 1 N. R. 13 E. M. D. M.



584-37 Pino Blanco Q. M.  
39 Sarah Francis Mine.

3243  
5  
39

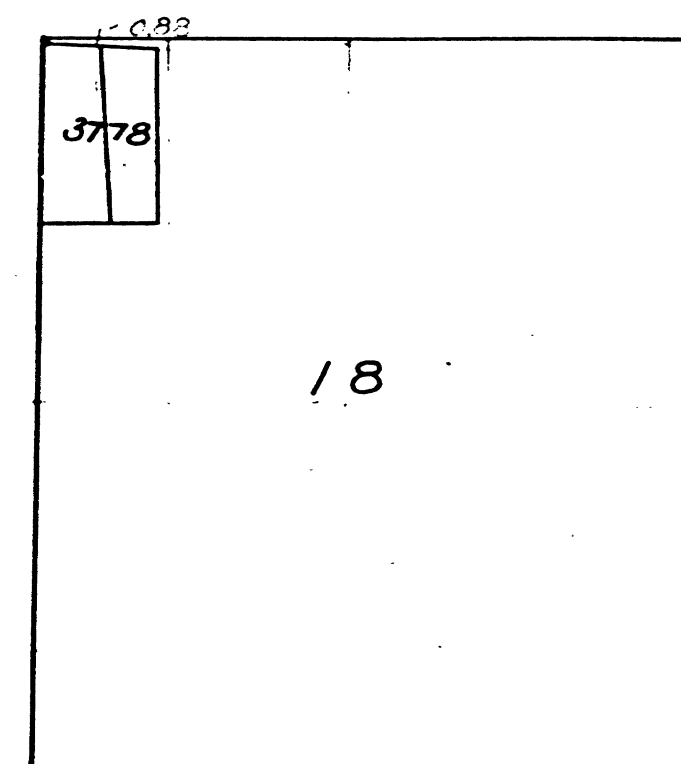
12

The above diagram of Sections land 12, T. 1 N. R. 13 E., Mount Diablo Meridian, is correctly copied from the amended plat on file in this office.  
U.S. Surveyor General's Office.  
San Francisco, California.  
November 10<sup>th</sup> 1897.

U.S. Surv. Gen. Cal.

Seal.

T. 1 N. R. 13 E. M. D. M.



3778. Welsh and Libbie Claim.

DEPARTMENT OF THE INTERIOR,  
GENERAL LAND OFFICE,  
Washington, D. C. Feb. 5, 1908:  
I hereby certify that this is a true copy  
of the plat of official survey of the lands  
to which it relates, on file in this office.

*W. H. Brown*  
Recorder, General Land Office.

The above diagram of Sec. 18, T. 1 N. R. 13 E. M. D. M. is correctly copied from the original on file in this office.  
U.S. Surveyor General's Office.  
San Francisco, California.  
October 23, 1900.

*J. M. Gleaves*  
U.S. Surv. Gen'l Cal.

Seal.

The above diagram of Township N<sup>o</sup> 1 North, Range N<sup>o</sup> 13 East, Mount Diablo Meridian, correctly shows the amendments made in accordance with the plats of mining surveys approved to date.  
U.S. Surveyor General's Office.  
San Francisco, California,  
December 26<sup>th</sup> 1888.

*W. H. Brown*  
U.S. Surv. Gen'l Cal.

41 026

CHAINS

0 20 40 60 80 120

T. 1 N. R. 13 E. M. D.

11  
B  
L  
N